

SMEC

SL 3500 Series

HORIZONTAL TURNING CENTER

SL 3500 Series

SL 3500
SL 3500M
SL 3500L
SL 3500LM

SMEC

SL 3500 Series

HORIZONTAL TURNING CENTER



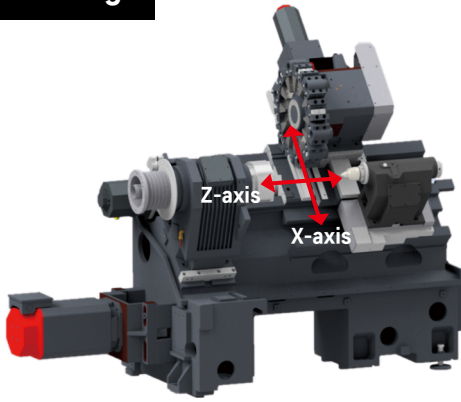
High performance turning center that excels in heavy duty and high precision cutting combined with enhanced productivity and user convenience

- 45° slant torque tube ribbed bed supporting heavy duty cutting
- Capable of high precision even during powerful heavy duty cutting
- Significantly reduced non-cutting time for high efficiency machining
- Servo turret to enhance high-speed performance
- Low center of gravity design minimizing vibration and thermal growth for high precision turning

SMEC

Machine Tools

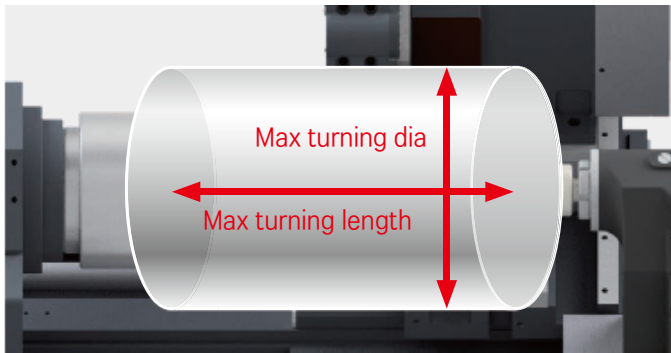
Machine Design



Model	Travel mm(inch)		Rapid traverse m/min(ipm)	
	X-axis	Z-axis	X-axis	Z-axis
SL 3500	280(11.03)	855(33.67)	12(472.45)	15(590.56)
SL 3500M	280(11.03)	825(32.49)	20(787.41)	24(944.89)
SL 3500L	280(11.03)	1605(63.19)	12(472.45)	15(590.56)
SL 3500LM	280(11.03)	1575(62.01)	20(787.41)	24(944.89)

- All travel axes are comprised of high rigidity box guideways enabling heavy duty cutting and superb productivity.

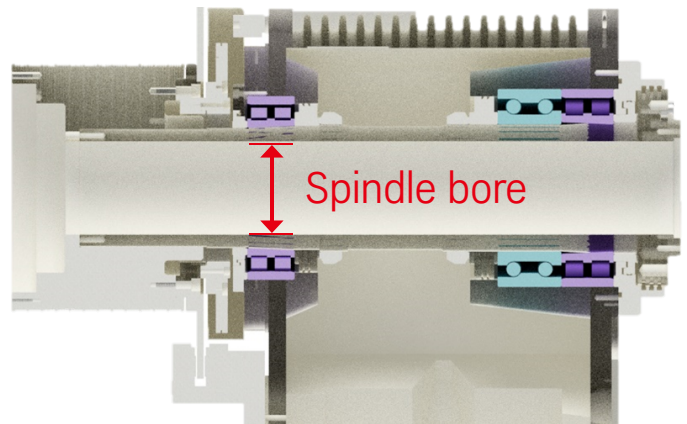
Work Range



Model	Max turning dia mm(inch)	Max turning length mm(inch)
SL 3500	500(19.69)	780(30.71)
SL 3500M	500(19.69)	750(29.53)
SL 3500L	500(19.69)	1530(60.24)
SL 3500LM	500(19.69)	1500(59.06)

- Providing a large work envelope, ensuring cost effective productivity.

Head



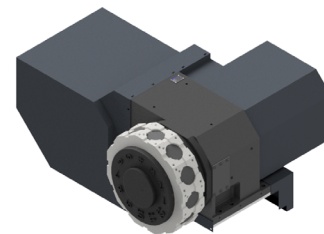
- The high precision Double Row of Cylindrical Roller Bearings and Angular Ball Bearings on the front end of the spindle and the Double Row of Cylindrical Roller Bearings on the back end of the spindle ensure high precision, high speed machining performance.

Turret



Servo Turret

- The turret uses a highly reliable, high-power servo motor and the Non-stop Random index method.
- The 0.25 second turret indexing time significantly reduces non-cutting time, while the 3 piece curvic coupling greatly enhances the clamping force and index accuracy.



BMT milling turret

- This 12 station (BMT75) turret with the largest in class curvic coupling and power hydraulic clamping force is capable of accepting a rotary tool in every tool position and allows a variety of machining operations with a single set-up.

Machine Specifications

[]: Option

DESCRIPTION			SL 3500		SL 3500M		SL 3500L		SL 3500LM	
			A type	B type	A type	B type	A type	B type	A type	B type
Chuck	Chuck size	inch	12"	15"	12"	15"	12"	15"	12"	15"
Capacity	Swing over bed	mm(inch)	680(26.78)		680(26.78)		680(26.78)		680(26.78)	
	Swing over Cross slide	mm(inch)	505(19.89)		505(19.89)		505(19.89)		505(19.89)	
	Max. Turning Diameter	mm(inch)	500(19.69)		500(19.69)		500(19.69)		500(19.69)	
	Max. Milling Diameter	mm(inch)	—	—	526		—	—	526	
	Max. Machining Length	mm(inch)	780(30.71)		750(29.53)		1530(60.24)		1500(59.06)	
Spindle	Spindle Speed	rpm	2,500	2,000	2,500	2,000	2,500	2,000	2,500	2,000
	Spindle Nose	ASA	A2-11	A2-11	A2-11	A2-11	A2-11	A2-11	A2-11	A2-11
	Draw Tube ID	mm(inch)	103(4.06)	1175(4.63)	103(4.06)	1175(4.63)	103(4.06)	1175(4.63)	103(4.06)	1175(4.63)
	Spindle Bore Diameter	mm(inch)	115(4.53)	132(5.2)	115(4.53)	132(5.2)	115(4.53)	132(5.2)	115(4.53)	132(5.2)
	Spindle Motor (Cont./Max)	Kw(Hp)	18.5/26(24.81/34.87)		18.5/26(24.81/34.87)		18.5/26(24.81/34.87)		18.5/26(24.81/34.87)	
Travels	X-axis travel	mm(inch)	280(11.03)		280(11.03)		280(11.03)		280(11.03)	
	Z-axis travel	mm(inch)	855(33.67)		825(32.49)		1605(63.19)		1575(62)	
	X-axis Rapid traverse rate	m/min(ipm)	12(472.45)		20(787.41)		12(472.45)		20(787.41)	
	Z-axis Rapid traverse rate	m/min(ipm)	15(590.56)		24(944.89)		15(590.56)		24(944.89)	
Turret	Number of tool stations	ea	10[12]		12 (BMT65)		10[12]		12 (BMT65)	
	Turning tool shank size	mm(inch)	25(1)		25(1)		25(1)		25(1)	
	Boring bar diameter	mm(inch)	50(1.97)		50(1.97)		50(1.97)		50(1.97)	
	Turret index time(next station swivel time)	sec	0.25		0.25		0.25		0.25	
	Rotary tool speed	rpm	—		4,500		—		4,500	
	Rotary tool motor (Cont./Max)	kW(Hp)	—		3.7/5.5(4.97/7.38)		—		3.7/5.5(4.97/7.38)	
Tailstock	Quill diameter	mm(inch)	130(5.12)		130(5.12)		130(5.12)		130(5.12)	
	Quill stroke	mm(inch)	120(4.73)		120(4.73)		120(4.73)		120(4.73)	
	Spindle taper	MT	MT4 (Built-in)		MT4 (Built-in)		MT4 (Built-in)		MT4 (Built-in)	
Machine	Size [with Side Chip conveyor] LxWxH	mm(inch)	3,885[4,736] x 1,897 x 2,130 (152.96[186.46] x 74.69 x 83.86)				5,079[5,926] x 1,885 x 2,130 (199.97[233.31] x 74.22 x 83.86)			
	Size [with Rear Chip conveyor] LxWxH	mm(inch)	—				—			
	Weight	kg(lb)	8300(18,299)		8300(18,299)		9300(20,503)		9300(20,503)	
	Coolant tank capacity	Liter(gal)	234(61.82)		234(61.82)		300(79.26)		300(79.26)	
Electric power supply			kVA/V	42/220	36/220	57/220		42/220	36/220	57/220
Controller			FANUC, SIEMENS				FANUC, SIEMENS			



SMEC Co., Ltd.

157-10, Goldenroot-ro, Juchon-myeon, Gimhae-si,
Gyeongsangnam-do, Republic of Korea
Tel +82 55 340 4800 / Fax +82 55 340 4740

www.smecmachinetools.com